

JULY 1994

MODEL BOATS

£1.95

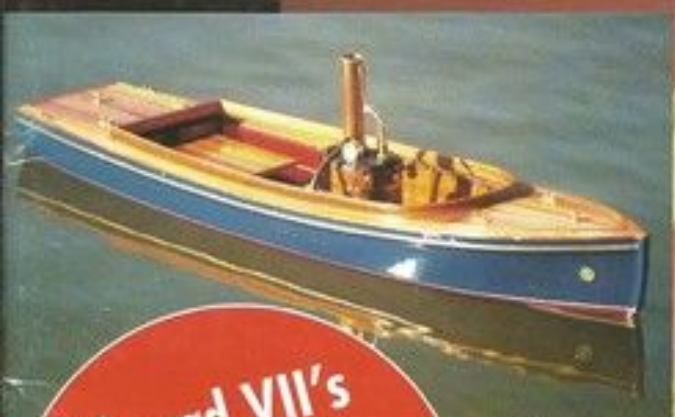
UK'S TOP SELLER

BUILDING • NEWS • REVIEWS • REFITS

ROYAL REVIEWS!

Ellesmere Port Weekend Preview

FREE PULL-OUT GALLERY
Part three



Edward VII's yacht Britannia...
...and Victoria & Albert Steam Launch

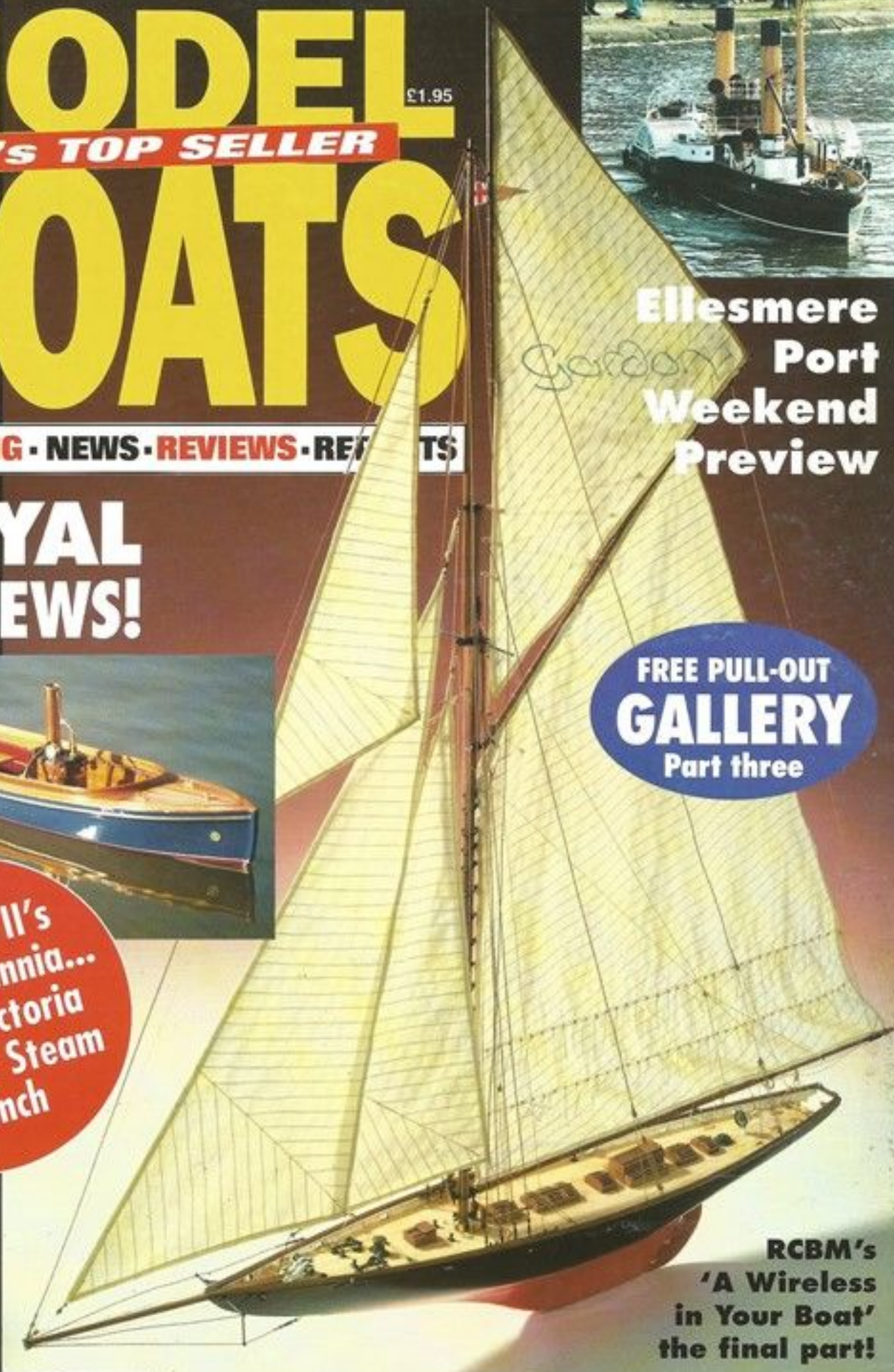
Early Season Regatta News

RCBM's 'A Wireless in Your Boat' the final part!

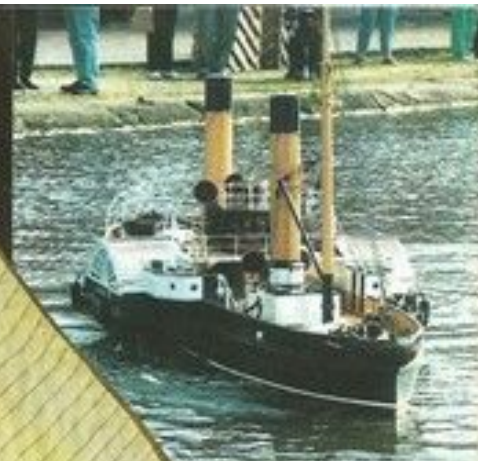


MORE PAGES-MORE COLOUR

Incorporating the best of **RADIO CONTROL Boat Modeler**



Gordon





Ellesmere Port

JON GODSELL

looks back to last year's Model Boat Convention and urges you not to miss this year's International Boat Convention and National 'C' Class Championships

The time is rapidly approaching when one has to decide whether or not to enter the 1994 convention.

By now most people know that the NAVIGA C Class World Championships are scheduled to be held at the Ellesmere Port Boat Museum. To prepare people in this country for this momentous event, the M.P.B.A. have been holding the National C Class competition together with the F6 and F7 display events at this venue for the last three years in conjunction with the Ellesmere Port Convention.

A brief look back at last year's Convention may whet your appetite to go along this year. The overall entry for the 1993 Convention was less than it had been in previous years, but the standard of the entries was of a high order, which continued a trend I have noted at other model events. This was most noticeable in the C Class Championships where the entry was really quite poor. I hope that when the time comes to choose the models that will represent Great Britain in the World Championships that there will be a larger selection to choose from than has hitherto been the case.

The F6 and F7 team display championships provided some pretty spectacular explosions, but I felt that if we were going to compete successfully with the rest of the world then some more innovation and imagination is going to be required in this area.

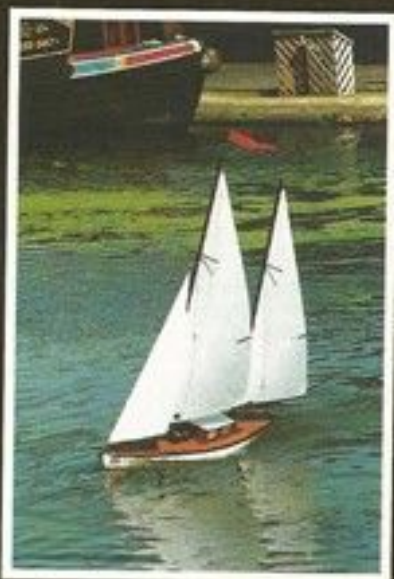
One of the most interesting and popular features of the whole weekend is the Venetian Fete. This is held on the first evening of the Convention and

consists of illuminated models sailing through a channel which is marked with flashing port and starboard hand buoys into a harbour complex which is again correctly illuminated. The vessels then turn and sail back down the channel; the models are judged not only on how well they negotiate the channel but also on whether they are appropriately lit. The Judge for this competition, by the way, was a Pilot on the Mersey. Afterwards most people repaired to the bar for liquid refreshment, or just to thaw out!

The following day was pretty much the same as the previous one, with the display teams having another outing on the lower basin. The top basin is where most of the sailing takes place, and here also the public is able to approach the water's edge to be entertained by the irrepressible Max Hundleby, who stands on his box for almost the whole period the museum is open, informing the public about the models that can be seen on the water, which range in size from tiny plastic kits to Bill Wilkinson in "Cracker". Here also the general public can engage those in charge of the various vessels in a cheerful banter which does much for the reputation of model boaters.

One of the best features of the convention are the model traders, the numbers of which increase with every year.

The Convention is now well established in the model boating calendar, and is as far as I am aware unique in its concept. I would thoroughly recommend a visit to see just what the area has to offer, not only in terms of our maritime history but also to view modern vessels and port practices. You will also find some stunning models and, for those with a less of an interest in model boats than we would otherwise desire, there are umpteen diversions in the near vicinity.



Top is Richard Webb with his model 'Wonder' serialised as a plan feature in Model Boats last year. The working padlock is from 'Wonder'. Aft name? Boat is one of the fine scale sailing craft present at Ellesmere. Unfortunately we do not have any father details on this model.



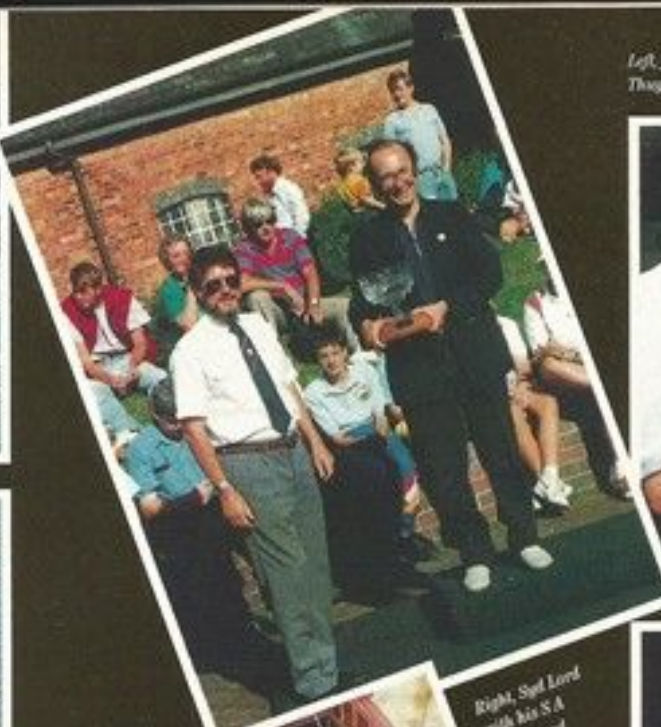
Top, Alan Miller's HMS *Armad*. Above, a moment from the PE & F7 displays as the *Swat Fire-fighting Team* goes into action. Right, *M Anon's* *Wasa* is the static model category.



A selection of the wonderful models of last year's show to whet your appetite for this year. Above is Jim Nyles' *General Wolfe*. Right is the winner of last year's C3 class, *The raising of the Mary Rose* by Andy Roberts.



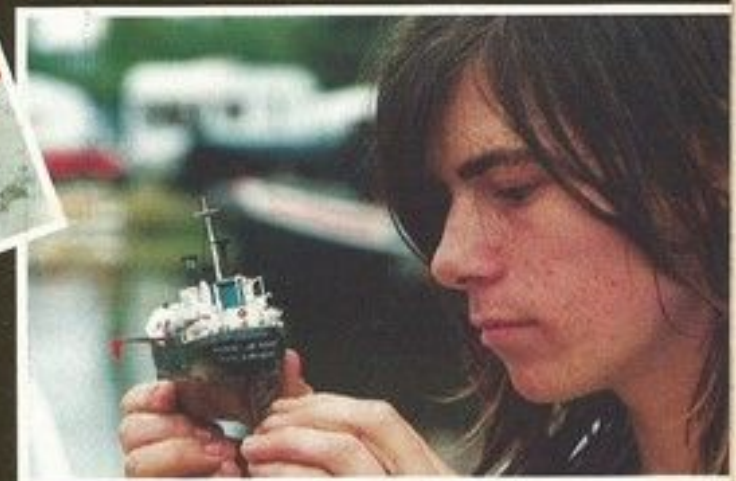
Left, Judge David Abbott (left) and MPTA Secretary Michael Reading pose with the Willy Thugbaert Award. Below, Judge Mike Finnis (left), Ron Swinden, and Steve Froberg



Right, Syd Lord with his S.A. Tagelwood.

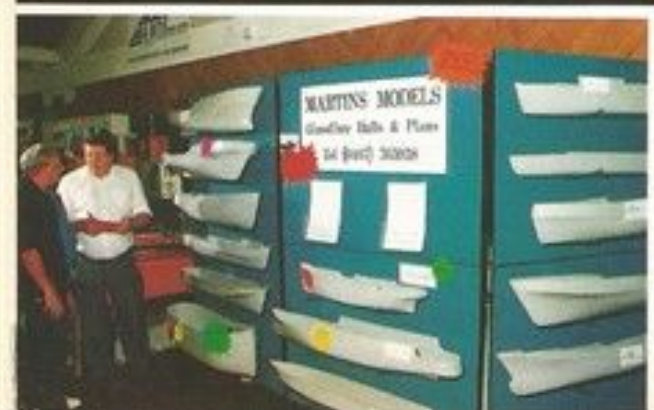
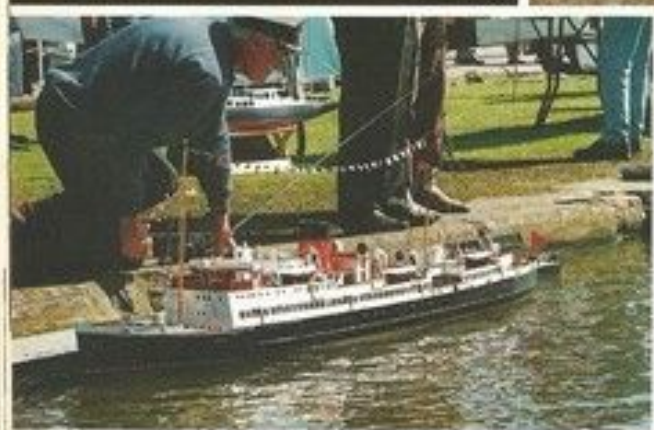
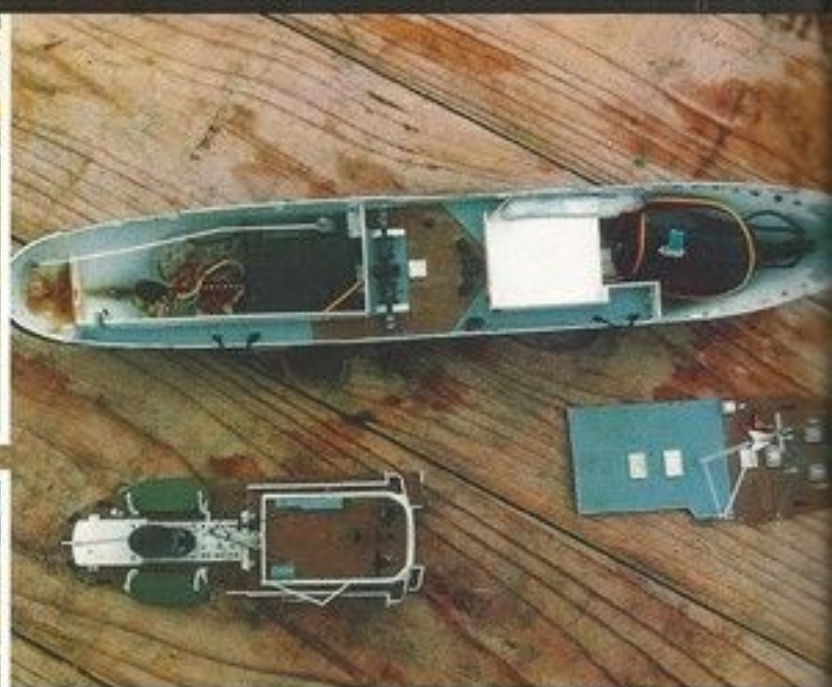


Right and below, detail of the steam plant in Ken Gombak's Queen steam launch, and the man himself with one of his fine creations which delight the children, young and old.



Right, we don't know who this modeller is but what a wonderful model. Great for the boat!





Left column, top to bottom. Boats, boats, boats on the canal. Ron Eyre's *Rossie* is a regular visitor to such events. Harvey Gasfield of 'Boats 'n' Bits' chats to possible customers. All the happy winners pose with their hardware.

Bottom, Martin's Models displayed their range of hulls and plans.

Top, intervals of Marie Jeanne.

Above, the Coastal Forces Model Boat Group showed a wonderful selection of warship models.